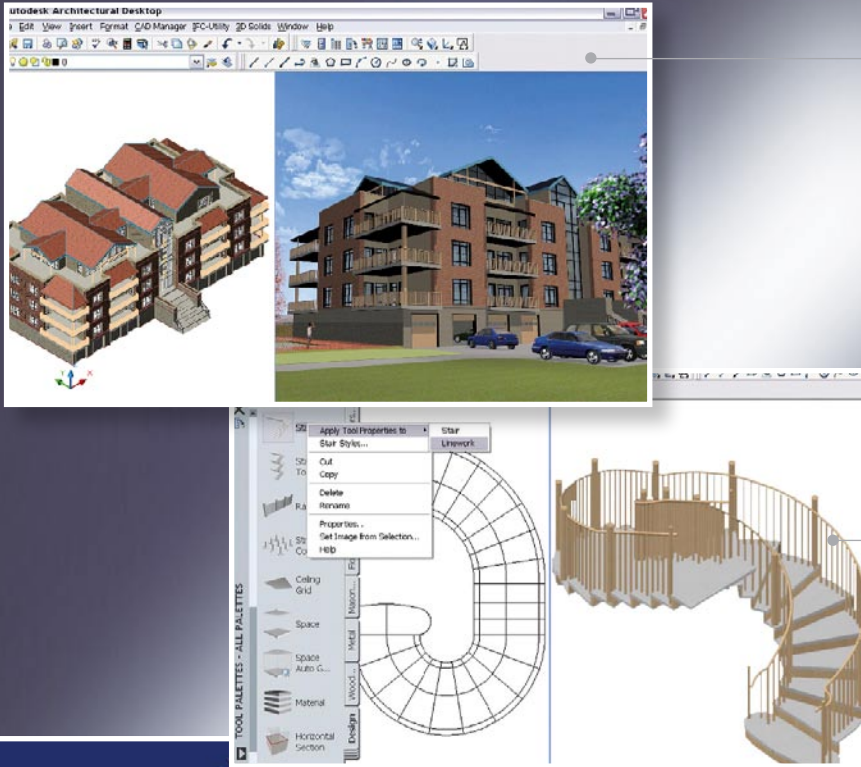
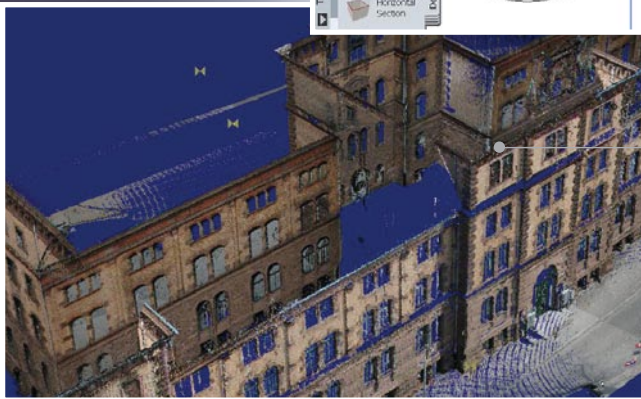


Laser Scanner Photon™ - Architecture Package



[A] Integrated rendering to create lifelike design visualizations

[B] 3D object with textures



[C] Laser Scanner 3D point cloud

[D] Better AutoCAD for Architects

Work in the familiar AutoCAD environment, using tools that are purpose-built for architectural drawing and design

FARO Laser Scanner Photon™

The FARO Laser Scanner Photon™ is a portable non-contact measurement system which uses laser technology to accurately measure manufacturing plants, processing facilities, and in specialized applications ranging from forensics to heritage sites. The system rotates 360 degrees and automatically measures everything within the line of sight from the scanner's position. The stand-alone system records millions of 3D measurements in real time.

Autodesk® Architectural Desktop Software

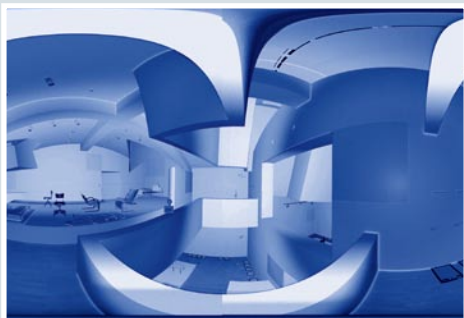
Autodesk Architectural Desktop enables you to create your architectural documentation faster. The software also gives you more tools that automate tedious drafting tasks, making document coordination even easier. Autodesk® Architectural Desktop provides the best AutoCAD®-based design and documentation productivity for architects.

Features

- ▶ Immediate Productivity
- ▶ Flexibility in Implementation and Use
- ▶ Smooth Collaboration
- ▶ Combine your designs with the as-built situation

Architecture Package

Applications



Technical Specifications

Technology

3D CAD system with comprehensive functionality for architects and engineers. Based on AutoCAD technology.

Features

- Automate the creation of details and maintain consistent annotation
- Walls, Doors and Windows
- Stairs
- Spaces - automatically tag every room in a drawing, complete with room areas
- Sections and Elevations
- Scheduling
- Integrated Rendering
- Dimensioning

Advantages - A Better AutoCAD for Architects

Work in the familiar AutoCAD environment, using tools that are designed for architectural drawing and design.

Immediate Productivity

Begin using Autodesk Architectural Desktop with minimal training, creating documentation, drawings and schedules faster and with fewer errors.

Flexibility in Implementation and Use

There are many ways to get started with Architectural Desktop. For example, you could start by using wall, door, and window objects from the design palette. Or, you could begin by using the vast detail library to automate this common, time-consuming task. When you are ready, you can incorporate additional features to improve your productivity.

Smooth Collaboration

Exchange information easily using the industry leading DWG file format and quickly coordinate rich design information with engineers. Use integrated rendering to create lifelike design visualizations that enhance communications with clients.

Field of applications

Autodesk Architectural Desktop is intended to specifically help users in architecture and building construction to efficiently design and redesign buildings of all kinds. The integration into Autodesk's AutoCAD family gives you all the 3D CAD capabilities needed for you daily work. Combining it with the FARO Laser Scanner Photon™ enables you to get the as-built situation into your designs.

System Requirements

- Microsoft Windows XP (Professional or Home Edition, SP1 or later); Windows 2000 (SP2 or later); Windows NT 4.0 (SP6)
- 1 GHz processor (2.5 GHz recommended)
- 1 GB RAM (2 GB recommended)
- Mouse with 2 buttons and wheel
- Graphics Card with 32MB & OpenGL hardware acceleration
- Ethernet card for licensing

